

Nature's Functional Water Edible Flavored Water "Medical Invention Thin Film Mineral Catalyst"

Tsai-Chuan Lu

No. 560, Dongyi Road, Chiayi City, Taiwan.

***Corresponding Author:** Tsai-Chuan Lu. No. 560, Dongyi Road, Chiayi City, Taiwan.

Received date: February 15, 2025; **Accepted date:** February 26, 2025; **Published date:** March 10, 2025

Citation: Tsai-Chuan Lu, (2024), Nature's functional water edible flavored water "Medical Invention Thin Film Mineral Catalyst", *Journal of Clinical Case Reports and Studies*, 6(3); **DOI:**10.31579/2690-8808/248

Copyright: ©, 2025, Tsai-Chuan Lu. This is an open access article distributed under the Creative Commons Attribution License, which permits unrestricted use, distribution, and reproduction in any medium, provided the original work is properly cited.

Abstract

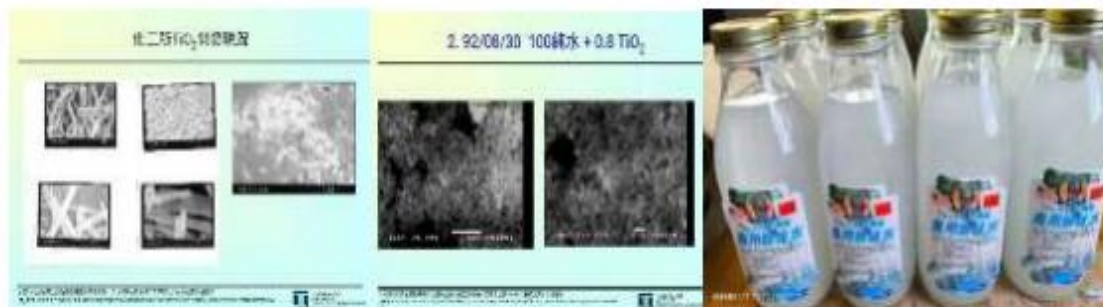
Water is essential for many aspects of body function. About half of our blood is "plasma," more than 90% of which is water. Plasma is essential for delivering energy, nutrients, and oxygen to the cells in the body that need it most. Water helps remove waste through the kidneys. It also helps keep joints lubricated, the digestive system functioning properly, body temperature controlled, and skin plump and strong! Life's Natural Functional Water Medical Catalyst Mineral Film Drinking Water Enters the Blood Invention Patent! The world's first application to add 25cc to 100cc "physically ground mineral film thermal catalyst water" to drinking water, referred to as Nature's Functional Water!

Key Words: flavored water; mineral catalyst; hydrophilic mineral

Introduction

Water is essential for many aspects of body function. About half of our blood is "plasma," more than 90% of which is water. Plasma is essential for delivering energy, nutrients, and oxygen to the cells in the body that need it most. Water helps remove waste through the kidneys. It also helps keep joints lubricated, the digestive system functioning properly, body temperature controlled, and skin plump and strong! Life's Natural Functional Water Medical Catalyst Mineral Film Drinking Water Enters the Blood Invention Patent! The world's first application to add 25cc to 100cc "physically ground mineral film thermal catalyst water" to drinking water, referred to as Nature's Functional Water! The daily water requirement of the human body is 1,000 cc to 2,500cc. Drink, rinse your

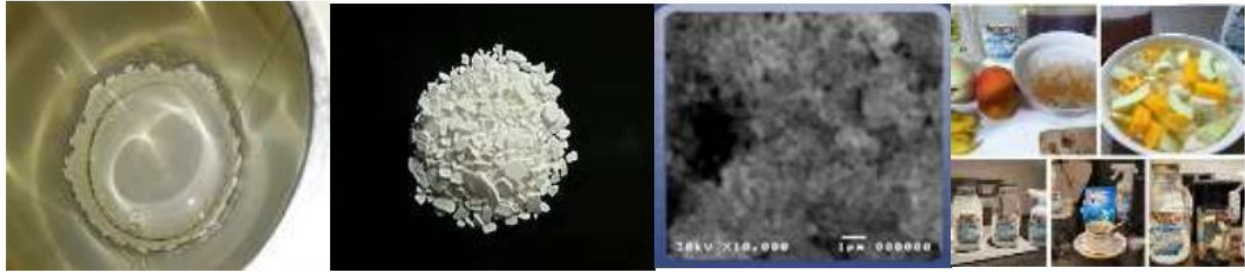
mouth, smell the liquid, and mix it with your tongue. 80% to 90% of the water required for human body functions will be absorbed into the lymphatic and blood cell membrane tissues to metabolize the blood cell membrane! Viruses and bacteria can burst, oxidize, and eliminate them when encountering them. The human lymphatic gland circulation also transports various parts of the body and organs to supply the blood with moisture and stamens, which can secrete and excrete old and dead viruses! Producing oxygen to the blood can promote the activation of original stem cells, blood genes, seeds, regeneration of blood and stamen cell membranes!



1. Figure Nanocrystalline grains! 2. Figure Nano thin film sheet! 3. Figure Nano Mineral Film Ho2

The tap water supplied is "fully compliant with drinking water quality standards." In fact, tap water in various regions can be boiled and drunk directly. Taiwan's drinking water quality standard for residual chlorine in tap water is 0.2~1.0 mg/L. Compared with the World Health Organization The upper limit of residual chlorine in the Organization (WHO) is 5 mg/L, or the upper limit of residual chlorine in the United States is 4 mg/L. The amount of residual chlorine in China's drinking water is quite low. In addition, residual chlorine is a moderately strong oxidizing agent and is not a carcinogen. When it comes in contact with fruits, vegetables, food, human saliva and gastric juice, it will quickly react and eliminate its oxidizing ability. Therefore, trace amounts of residual chlorine will not

have adverse effects on human health.! The world's first application to add 25cc to 100cc of "physically ground mineral film thermal catalyst water" to drinking water, referred to as nature functional water! It is safe and hygienic to drink 1,000cc to 2,500cc of water required for daily life of the human body! Tap water contains residual chlorine and various types of chemical poisons, unknown bacteria count "raw water" needs to be boiled and drunk directly, but the "crystalline nano" heated drinking machine does not seal the tank "carcinogens"? Add natural functional water to decompose harmful substances and explode the residue. Chlorine Ho2 water molecule chemical reaction "crystalline nanocarcinogen"!

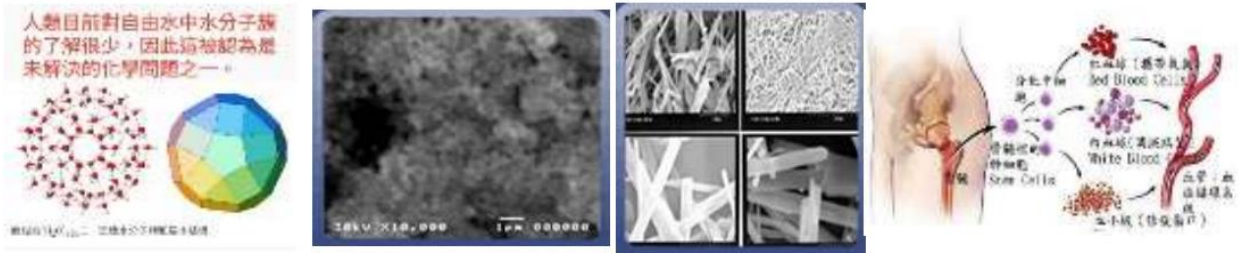


1. Residual chlorine crystals in tap water 2. Hydrochloric acid thermal reaction calcium chloride 3. Mineral film catalyst water 4. Add mineral film

RO reverse osmosis claims that it can be drunk raw mainly because its filtration rate is very high. Generally, the most popular RO membrane on the market is 95%. However, there are also so-called low-pressure membranes with a filtration rate of 70%. Boiled water may not be 100% safe to drink raw. If the water contains chemical toxins, you will still be poisoned even if you boil it and drink it. However, it is difficult to get rid of this concept in Taiwan. It is believed that water must be boiled before drinking. Whether you cook or not depends on whether you can overcome your inner obstacles. A Spanish research team recently examined 362 brands of bottled water, including 131 mineral and spring water, and 3 treated purified water. The samples inspected include two samples newly shipped from the factory and two samples taken one year after leaving the factory. The scope of the inspection includes five phthalates (phthalate, including the infamous DEHP, etc.), DEHA, alkylphenols, and bisphenol A. You should drink more tap water, RO reverse osmosis water, bottled water, etc. to dilute the blood viscosity and make the blood thinner immediately. However, you should have a healthy concept in drinking water. The ideal dilution water is boiled water or light tea at 20 to 25°C. Its tension and density and other physiological activities are very close to blood and tissue cells, and are easily absorbed and utilized by the human body. Patented invention for adding life-natural functional water medical catalyst mineral film into drinking water into the blood! The human 4 body's daily diet and drinking water contain trace amounts of film-based media, which are converted into blood cells through the digestive system process and transported to the meridians of the body through lymph glands for elimination. When cells age or become damaged, they die and are replaced by new cells!

Under normal circumstances, the lifespan of red blood cells is about 120 days. Red blood cells are produced by bone marrow and enter the blood circulation. They are responsible for transporting oxygen to various organs in the body. When they age and lose the ability of normal gas exchange, they are cleared by phagocytes of the reticuloendothelial system. On average, all the blood in the whole body can pass through the

heart once every 40 seconds, and the heart outputs about 70 ml of blood each time it contracts. The average length of blood vessels in the human body is about 100,000 kilometers, which can circle the earth two and a half times.! Drinking more water can dilute the blood viscosity, making the blood become thinner immediately! The human body produces an average of 10 billion new cells a day to replace the old cells. If the body can continue to remove old cells and regenerate new cells, it can maintain youthfulness and health regardless of age, state, and "immune cells" play an important role in clearing old cells. When too many aging "zombie cells" accumulate in the body, they will secrete inflammatory 5 factors and cause aging-related diseases, such as dementia, diabetes, and even cancer etc. Immune cells can get rid of "zombie cells" and help the body suppress tumors, rejuvenate and repair tissues. The water needed for daily life is added with life-natural functional water. Medical catalyst mineral film drinking water enters the blood. Invention patent! The tiny channels of the cell membrane are stimulated by the magnetic ions of the catalyst mineral film and enter the blood cell channels. They are exposed to the body's thermal energy temperature "Titanium Dioxide (TiO₂), Type A "Hydrophilic mineral, Liuhuang fen mineral" Chinese and Western medical chemists consider the drug "crystalline powder not to be sulfated and liquefied" to be a chemical synthesis product of low toxicity! The medical catalyst mineral film is processed and ground for a long time by special physical machinery, and the crystalline powder is not ground and diffused The H₂O water molecule cluster, which has a material body area several cubic meters in size, has obtained an international medical invention patent and is manufactured for human lymphatic circulation, transportation to various parts of the body, and supply of water to organs in the body. Oxygen production can promote the activation of original stem cell blood genes and regenerate blood cell membranes! There is no need to worry about blood genes, patients do not need to replace human organs, the elderly, sick and disabled need to wait for organs to extend their lives, etc. There is no suitable organ. Death from transplantation!



1. H₂O water molecule group type, 2. Water molecule catalyst mineral membrane, 3. Crystal grains of water molecules, 4. Classification of blood plasma components.

Plasma helps transport water, nutrients, minerals, medications, and hormones throughout the body. It also transports waste products to your kidneys. Your kidneys then filter the waste products from your blood. Plasma is composed of water, protein, and lipids (fats). It carries water, fat-soluble nutrients, and other substances to and from different organs. The human body is composed of somatic cells + germ cells. Somatic cells contain twice as many chromosomes as germ cells. Except for germ cells, other cells in the human body contain 23 pairs of chromosomes (except for some cells in the blood that do not contain nuclei). The average diameter of cells is only 10 to 20 microns. They are such "little partners" that contribute their strength to the living world every day. According to the rule of survival of the fittest, if there are not more new cells or the renewal rate is faster than that of senescent cells, it will cause the accumulation of senescent cells and the degradation of tissue structure. When tissues and organs lose their functions due to cell aging, if the aging and diseased cells are replaced with healthy cells in time, they will be quickly repaired and continue our life functions.

Immune cells serve as the body's defense force, helping you fight against harmful microorganisms from the outside world and pathological and cancerous cells that arise at any time in the body. As we age, our body needs to use more and more immune cells. However, as we age, the ability of immune cells gradually decreases, causing them to work overload. If young, high-quality immune cells are preserved by special means, and energetic immune cells can be reinfused into the body when needed - the immune cells will be numerous and highly active, and can truly defeat the disease. The body's own cells age and the accumulation of lesions gradually increases with age, until new cells cannot support the renewal of overall cells, and immune cells cannot block the invasion of mutated

cells. As a living organism, humans have embarked on the path of aging, disease, and death. The daily needs of the human body include drinking water from the catalytic mineral film, which enters the bloodstream and is injected into the tumor tissue. The solid tumor bursts into the pus and liquefies it, metabolizes and removes the cancer cells, and "vomits blood, pus, urine and defecation blood and pus" and is excreted slowly and evenly at even times, which is normal. An introduction to the seven types of cancer treatments, as well as the sequelae after surgery and the side effects caused by anti-cancer drugs, rather than dying from the cancer itself!

The human body's lymphatic circulation also transports the blood to various parts of the body and organs to supply blood with moisture, which can be excreted and excreted by old and dead viruses! It produces oxygen to the blood and can promote the activation of original stem cells, blood genes, seeds, regeneration of blood and pistil cell membranes! No need Because of the huge fear of blood genetics, patients do not need to replace human organs. The aging, sick and disabled need to wait for organs to prolong their lives, and they will die without suitable organ transplants! Life Natural Functional Water Medical Catalyst Mineral Film Invention Patent for Drinking Water to Enter the Blood! The human body's daily diet and drinking water contain trace amounts of film preparation media, which are converted into blood cells through the digestive system process and transported to the meridians of the body through lymph glands to eliminate cell aging. or damaged, they die and are replaced by new cells, eliminating cancer and eliminating the need for death from other medical treatments including: surgery, chemotherapy, radiation therapy, targeted therapy, immunotherapy, hormonal therapy, bone marrow transplantation, etc.



This work is licensed under Creative Commons Attribution 4.0 License

To Submit Your Article Click Here: [Submit Manuscript](#)

DOI:10.31579/2690-8808/248

Ready to submit your research? Choose Auctores and benefit from:

- fast, convenient online submission
- rigorous peer review by experienced research in your field
- rapid publication on acceptance
- authors retain copyrights
- unique DOI for all articles
- immediate, unrestricted online access

At Auctores, research is always in progress.

Learn more <https://auctoresonline.org/journals/journal-of-clinical-case-reports-and-studies>