

Total outflow graft thrombosis: From permanent circulatory support to temporary circulatory support by deactivating HeartMate 3™ and implanting Impella 5.5® in a high urgent bridge to transplant concept

SJ Bauer ^{1,2*}, U Boeken ³, A Lichtenberg ³, P Akhyari ¹

¹ Department of Thoracic- and Cardiovascular Surgery, West German Heart and Vascular Center Essen, University Hospital Essen, Essen, Germany.

² Department of Cardiac Surgery, University Hospital RWTH Aachen, Aachen, Germany.

³ Department of Cardiac Surgery, Medical Faculty, Heinrich-Heine-University, Duesseldorf, Germany.

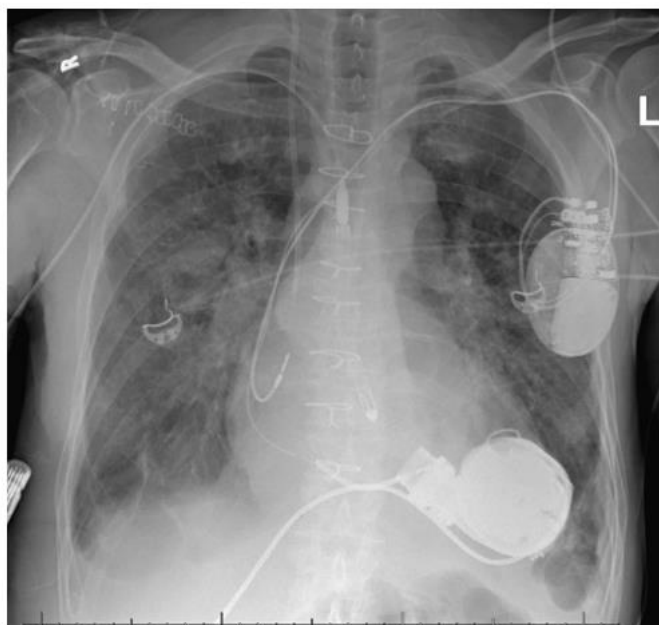
***Corresponding Author:** SJ Bauer, Department of Thoracic- and Cardiovascular Surgery, West German Heart and Vascular Center Essen, University Hospital Essen, Essen, Germany.

Received date: April 24, 2024; **Accepted date:** April 29, 2024; **Published date:** May 28, 2024

Citation: SJ Bauer, U Boeken, A Lichtenberg, P Akhyari (2024), Total outflow graft thrombosis: From permanent circulatory support to temporary circulatory support by deactivating HeartMate 3™ and implanting Impella 5.5® in a high urgent bridge to transplant concept, *J Clinical Cardiology and Cardiovascular Interventions*, 7(5); DOI: [10.31579/2641-0419/375](https://doi.org/10.31579/2641-0419/375)

Copyright: © 2024, SJ Bauer. This is an open access article distributed under the Creative Commons Attribution License, which permits unrestricted use, distribution, and reproduction in any medium, provided the original work is properly cited.

Image



Legend:

X-ray shows a male patient with two left ventricular assist devices. Initial presentation was with intermittent low-flow-alarms. After deactivating HeartMate 3™ due to outflow graft thrombosis and implanting Impella 5.5®, the patient was granted high-urgency status on the heart transplantation waiting list. He underwent heart transplantation 17 days later.



This work is licensed under Creative Commons Attribution 4.0 License

To Submit Your Article Click Here: [Submit Manuscript](#)

DOI: [10.31579/2641-0419/375](https://doi.org/10.31579/2641-0419/375)

Ready to submit your research? Choose Auctores and benefit from:

- fast, convenient online submission
- rigorous peer review by experienced research in your field
- rapid publication on acceptance
- authors retain copyrights
- unique DOI for all articles
- immediate, unrestricted online access

At Auctores, research is always in progress.

Learn more <https://auctoresonline.org/journals/clinical-cardiology-and-cardiovascular-interventions>